



OUTDOOR FABRIC COLLECTION

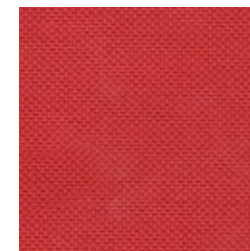
2023



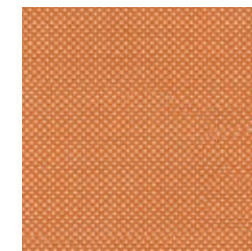
NARIO



02



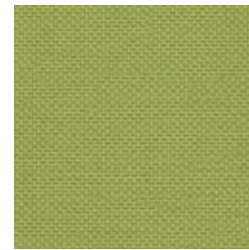
09



15



16



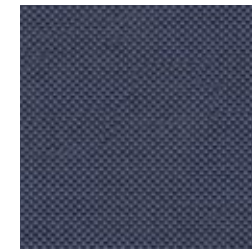
18



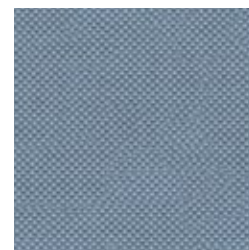
24



28



30



32



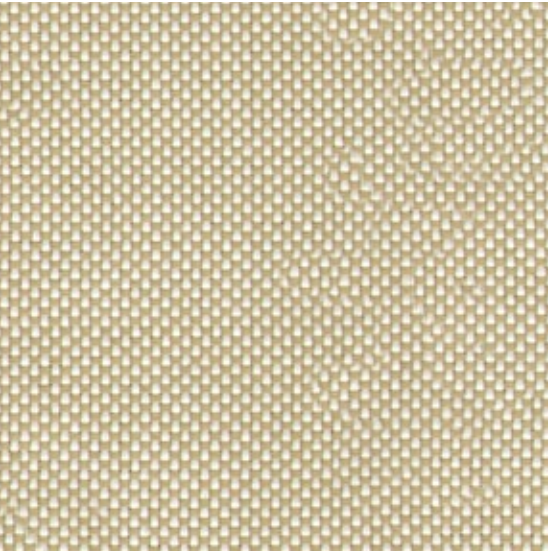
33



34



100



01



Colors may slightly vary due to photographic lighting sources or your monitor settings.

PRODUCT SPECIFICATIONS					
Technical Informations		Value			Test Method
TECHNICAL PROPERTIES					
Width (cm)	140				
Weight (gr/m2)	263				
Composition	% 100 Olefin				
PHYSICAL PROPERTIES					
Pilling	4			EN ISO 12945-2 : 2000 (5000 revs)	
Abrasion (martindale)	23.000			EN ISO 12945-2 : 1998	
Oil Repellency	3			ISO EN 14419	
Spray Test	4-5			BS EN ISO 1920	
Flammibility	pass			EN ISO 1021-1	
Anti Bacterial	pass			LIS L 1902	
FASTNESS					
Technical Informations	LOD	OD	OD+	OD++	Test Method
Light	7	7	7/8	8	BS EN ISO 105-B02
Weathering	6	6/7	7	7/8	BS EN ISO 105-B04
UV	4	4	4/5	5	ASTM G-154 (1200 Hours)
Washing	4/5			BS EN ISO 105-C06 40 C	
Sea Water	4/5			BS EN ISO 105-E02	
Pool Water	4/5			BS EN ISO 105-E03	
Rubbing	4/5			BS EN ISO 105-X12	

CARE AND MAINTANCE INSTRUCTIONS

- 1- Remove any residual soil by ligtly brushing or scraping the stain by sponging down with water
- 2- If further cleaning needed, apply a solution with soap an water. Work the solution into stain by lightly scrubbing the area with sponge or very soft bristle brush
- 3- Remove cleaning solutions with a clean soft towel or sponge to remove the stain and excess cleaning solution. (Repeat step 2 and 3 until stain is removed.)
- 4- Rinse the a
- Vacuum the fabric prior to cleaning
- Do not be alarmed if stain is not removed after jrst application and removal of cleaning solution
- If the fabric can be removed from furniture it may be cleaned in a mild soap and warm water (40 C°) solution in washing machine and dried in an environment also less then 40 C°.
- Do not steam press or dry in electric or gas dryers. Allow fabric to be air dried naturally
- Do not leave your product after 50 C° outside temperature under directly sunlight
- Results can be vary region by region
- The values for the products my have a varition of +/- %5
- Art Picture is for indoor use only

MIRELLA

CLASS A

MIRELLA



01



09



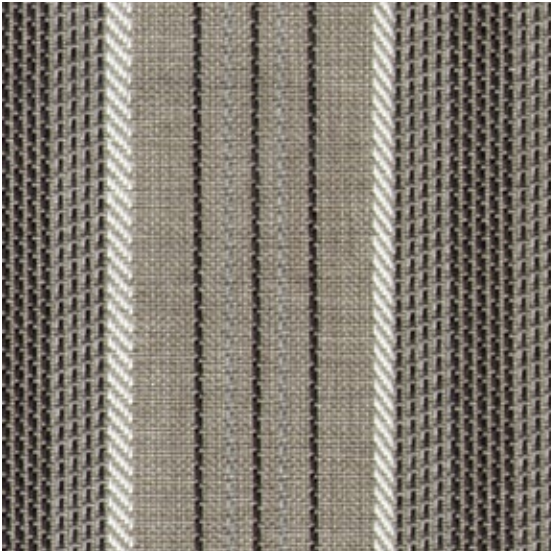
24



23



25



25

PRODUCT SPECIFICATIONS					
Technical Informations		Value			Test Method
TECHNICAL PROPERTIES					
Width (cm)	140 +/- 1 CM				
Weight (gr/m2)	206				
Composition	% 100 Olefin				
PHYSICAL PROPERTIES					
Pilling	4			EN ISO 12945-2 : 2000 (5000 revs)	
Abrasion (martindale)	13.000			EN ISO 12945-2 : 1998	
Oil Repellency	3			ISO EN 14419	
Spray Test	4-5			BS EN ISO 1920	
Flammibility	pass			EN ISO 1021-1	
Anti Bacterial	pass			LIS L 1902	
FASTNESS					
Technical Informations	LOD	OD	OD+	OD++	Test Method
Light	7	7	7/8	8	BS EN ISO 105-B02
Weathering	6	6/7	7	7/8	BS EN ISO 105-B04
UV	4	4	4/5	5	ASTM G-154 (1200 Hours)
Washing	4/5			BS EN ISO 105-C06 40 C	
Sea Water	4/5			BS EN ISO 105-E02	
Pool Water	4/5			BS EN ISO 105-E03	
Rubbing	4/5			BS EN ISO 105-X12	

CARE AND MAINTANCE INSTRUCTIONS

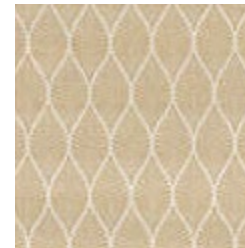
1- Remove any residual soil by ligtly brushing or scraping the stain by sponging down with water
2- If further cleaning needed, apply a solution with soap an water. Work the solution into stain by lightly scrubbing the area with sponge or very soft bristle brush
3- Remove cleaning solutions with a clean soft towel or sponge to remove the stain and excess cleaning solution. (Repeat step 2 and 3 until stain is removed.)
4- Rinse the a
Vacuum the fabric prior to cleaning
Do not be alarmed if stain is not removed after jrst application and removal of cleaning solution
If the fabric can be removed from furniture it may be cleaned in a mild soap and warm water (40 C°) solution in washing machine and dried in an environment also less then 40 C°.
Do not steam press or dry in electric or gas dryers. Allow fabric to be air dried naturally
Do not leave your product after 50 C° outside temperature under directly sunlight
Results can be vary region by region
The values for the products my have a varition of +/- %5
Art Picture is for indoor use only



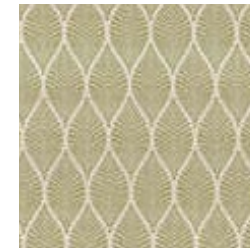
SEKOYA

GROUP A

SEKOYA



138



185



190



143



220



161



210



200



183

Product Specifications					
Technical Informations		Value			Test Method
TECHNICAL PROPERTIES					
Width (cm)	140				
Weight (gr/m2)	430				
Composition	% 51 Acrylic % 49 Pes				
PHYSICAL PROPERTIES					
Pilling	4-5			ISO 12945-2 2000	
Abrasion (martindale)	15.000			BS EN ISO 12947-2 2016	
Spray Test	90			BS EN ISO 1920	
FASTNESS					
Technical Informations	LOD	OD	OD+	OD++	Test Method
Light	7/8	7/8	7/8	7/8	BS EN ISO 105-B02
Weathering	7/8	7/8	7/8	7/8	ASTM G-154 (1200 Hours)

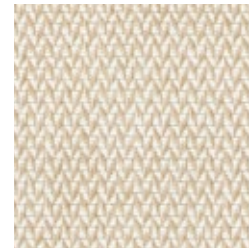
CARE AND MAINTANCE INSTRUCTIONS

1- Remove any residual soil by lightly brushing or scraping the stain by sponging down with water
2- If further cleaning needed, apply a solution with soap an water. Work the solution into stain by lightly scrubbing the area with sponge or very soft bristle brush
3- Remove cleaning solutions with a clean soft towel or sponge to remove the stain and excess cleaning solution. (Repeat step 2 and 3 until stain is removed.)
4- Rinse the a
Vacuum the fabric prior to cleaning
Do not be alarmed if stain is not removed after jrst application and removal of cleaning solution
If the fabric can be removed from furniture it may be cleaned in a mild soap and warm water (40 C°) solution in washing machine and dried in an environment also less then 40 C°.
Do not steam press or dry in electric or gas dryers. Allow fabric to be air dried naturally
Do not leave your product after 50 C° outside temperature under directly sunlight
Results can be vary region by region
The values for the products my have a varition of +/- %5
Art Picture is for indoor use only

LIVIO

GROUP A

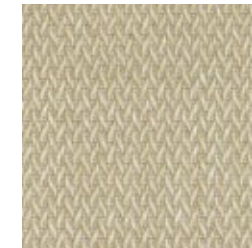
LIVIO



01



02



03



04



08



14



19



22



24



26



27

Colors may slightly vary due to photographic lighting sources or your monitor settings.



PRODUCT SPECIFICATIONS					
Technical Informations		Value			Test Method
TECHNICAL PROPERTIES					
Width (cm)	140				
Weight (gr/m2)	355				
Composition	% 100 Olefin				
PHYSICAL PROPERTIES					
Pilling	4-5			EN ISO 12945-2 : 2000 (5000 revs)	
Abrasion (martindale)	20.000			EN ISO 12945-2 : 1998	
Oil Repellency	3			ISO EN 14419	
Spray Test	4-5			BS EN ISO 1920	
Flammibility	pass			EN ISO 1021-1	
Anti Bacterial	pass			LIS L 1902	
FASTNESS					
Technical Informations	LOD	OD	OD+	OD++	Test Method
Light	7	7	7/8	8	BS EN ISO 105-B02
Weathering	6	6/7	7	7/8	BS EN ISO 105-B04
UV	4	4	4/5	5	ASTM G-154 (1200 Hours)
Washing	4/5			BS EN ISO 105-C06 40 C	
Sea Water	4/5			BS EN ISO 105-E02	
Pool Water	4/5			BS EN ISO 105-E03	
Rubbing	4/5			BS EN ISO 105-X12	

CARE AND MAINTANCE INSTRUCTIONS

1- Remove any residual soil by ligtly brushing or scraping the stain by sponging down with water
2- If further cleaning needed, apply a solution with soap an water. Work the solution into stain by lightly scrubbing the area with sponge or very soft bristle brush
3- Remove cleaning solutions with a clean soft towel or sponge to remove the stain and excess cleaning solution. (Repeat step 2 and 3 until stain is removed.)
4- Rinse the a
Vacuum the fabric prior to cleaning
Do not be alarmed if stain is not removed after jrst application and removal of cleaning solution
If the fabric can be removed from furniture it may be cleaned in a mild soap and warm water (40 C°) solution in washing machine and dried in an environment also less then 40 C°.
Do not steam press or dry in electric or gas dryers. Allow fabric to be air dried naturally
Do not leave your product after 50 C° outside temperature under directly sunlight
Results can be vary region by region
The values for the products my have a varition of +/- %5
Art Picture is for indoor use only



PLAIN MELENCE

GROUP B

PLAIN MELENCE			
			
PMEL16	PMEL18	PMEL20	PMEL70
			
PMEL72	PMEL79	PMEL583	PMEL690
			
PMEL691	PMEL693	PMEL694	PMEL783
			
PMEL833	PMEL834	PMEL835	PMEL870
			
PMEL872	PMEL874	PMEL875	PMEL876

Colors may slightly vary due to photographic lighting sources or your monitor settings.

PLAIN MELENGE



PMEL879



PMEL882

PLAIN MELENGE

PRODUCT SPECIFICATIONS		
Technical Informations	Value	Test Method
TECHNICAL PROPERTIES		
Width (cm)	137	EN 1773
Weight (gr/m2)	240	ISO 3801
Composition	100% Solution Dyed Acrylic	
PHYSICAL PROPERTIES		
Abrassion (martindale)	15.000	ISO 12947-2
Oil Repellency	5-8	ISO 14419
Spray Test	5-5	ISO 4920
Flame Resistance	pass	CAL TB 117 - 2013 Section 1
Water Repellent	pass	
Anti Stain	pass	
Anti Mould	pass	
Guarantee	5 Years	
FASTNESS		
Technical Informations		Test Method
Weathering	7/8	ISO 105 B04
UV	7/8	ISO 105 B02
Washing	7/8	ISO 105 C06

CARE AND MAINTANCE INSTRUCTIONS

Features

Water-repellent fabric with anti characterised by its design and fineness, by the soft touch and can be used in- and outdoor.

Applications

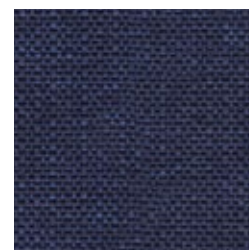
Indoor and outdoor furniture: upholstery, cushions, draperies e sheers. Suitable also for marine upholstery

Warranty

Irisun Living fabrics are guaranteed for 5 years concerning the UV resistance and the colour fastness. The warranty is valid in case of respect of the application of the fabric and of the instructions for care and cleaning.



TELMA



22



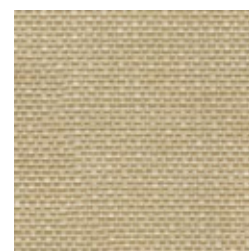
26



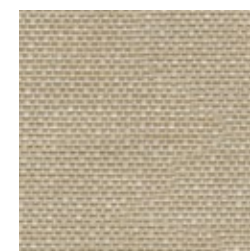
28



101



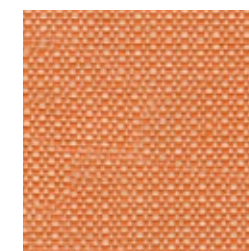
102



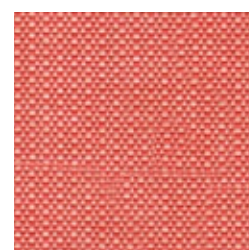
103



104



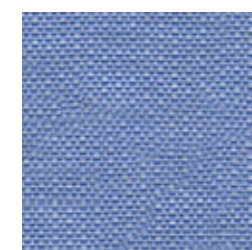
108



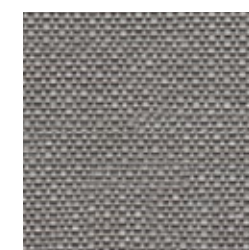
109



114



122



126



128

PRODUCT SPECIFICATIONS					
Technical Informations		Value			Test Method
TECHNICAL PROPERTIES					
Width (cm)		140			
Weight (gr/m2)		343			
Composition		% 100 Olefin			
PHYSICAL PROPERTIES					
Pilling		4-5			EN ISO 12945-2 : 2000 (5000 revs)
Abrasion (martindale)		50.000			EN ISO 12945-2 : 1998
Oil Repellency		3			ISO EN 14419
Spray Test		4-5			BS EN ISO 1920
Flammibility		pass			EN ISO 1021-1
Anti Bacterial		pass			LIS L 1902
FASTNESS					
Technical Informations	LOD	OD	OD+	OD++	Test Method
Light	7	7	7/8	8	BS EN ISO 105-B02
Weathering	6	6/7	7	7/8	BS EN ISO 105-B04
UV	4	4	4/5	5	ASTM G-154 (1200 Hours)
Washing	4/5				BS EN ISO 105-C06 40 C
Sea Water	4/5				BS EN ISO 105-E02
Pool Water	4/5				BS EN ISO 105-E03
Rubbing	4/5				BS EN ISO 105-X12

CARE AND MAINTANCE INSTRUCTIONS

1- Remove any residual soil by ligtly brushing or scraping the stain by sponging down with water
2- If further cleaning needed, apply a solution with soap an water. Work the solution into stain by lightly scrubbing the area with sponge or very soft bristle brush
3- Remove cleaning solutions with a clean soft towel or sponge to remove the stain and excess cleaning solution. (Repeat step 2 and 3 until stain is removed.)
4- Rinse the a
Vacuum the fabric prior to cleaning
Do not be alarmed if stain is not removed after jrst application and removal of cleaning solution
If the fabric can be removed from furniture it may be cleaned in a mild soap and warm water (40 C°) solution in washing machine and dried in an environment also less then 40 C°.
Do not steam press or dry in electric or gas dryers. Allow fabric to be air dried naturally
Do not leave your product after 50 C° outside temperature under directly sunlight
Results can be vary region by region
The values for the products my have a varition of +/- %5
Art Picture is for indoor use only



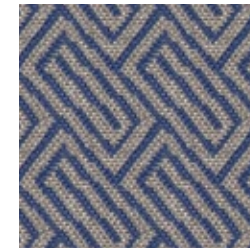
VERO

GROUP B

VERO



10



23



24



25



101



109

PRODUCT SPECIFICATIONS					
Technical Informations		Value			Test Method
TECHNICAL PROPERTIES					
Width (cm)	140				
Weight (gr/m2)	318				
Composition	% 100 Olefin				
PHYSICAL PROPERTIES					
Pilling	4			EN ISO 12945-2 : 2000 (5000 revs)	
Abrasion (martindale)	18.000			EN ISO 12945-2 : 1998	
Oil Repellency	3			ISO EN 14419	
Spray Test	4-5			BS EN ISO 1920	
Flammibility	pass			EN ISO 1021-1	
Anti Bacterial	pass			LIS L 1902	
FASTNESS					
Technical Informations	LOD	OD	OD+	OD++	Test Method
Light	7	7	7/8	8	BS EN ISO 105-B02
Weathering	6	6/7	7	7/8	BS EN ISO 105-B04
UV	4	4	4/5	5	ASTM G-154 (1200 Hours)
Washing	4/5			BS EN ISO 105-C06 40 C	
Sea Water	4/5			BS EN ISO 105-E02	
Pool Water	4/5			BS EN ISO 105-E03	
Rubbing	4/5			BS EN ISO 105-X12	

CARE AND MAINTANCE INSTRUCTIONS

1- Remove any residual soil by ligtly brushing or scraping the stain by sponging down with water
2- If further cleaning needed, apply a solution with soap an water. Work the solution into stain by lightly scrubbing the area with sponge or very soft bristle brush
3- Remove cleaning solutions with a clean soft towel or sponge to remove the stain and excess cleaning solution. (Repeat step 2 and 3 until stain is removed.)
4- Rinse the a
Vacuum the fabric prior to cleaning
Do not be alarmed if stain is not removed after jrst application and removal of cleaning solution
If the fabric can be removed from furniture it may be cleaned in a mild soap and warm water (40 C°) solution in washing machine and dried in an environment also less then 40 C°.
Do not steam press or dry in electric or gas dryers. Allow fabric to be air dried naturally
Do not leave your product after 50 C° outside temperature under directly sunlight
Results can be vary region by region
The values for the products my have a varition of +/- %5
Art Picture is for indoor use only



NORAH



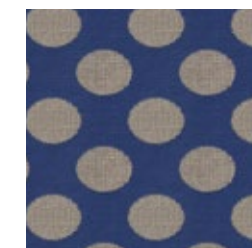
01



09



10



23



24



101



109

PRODUCT SPECIFICATIONS					
Technical Informations		Value			Test Method
TECHNICAL PROPERTIES					
Width (cm)	140				
Weight (gr/m2)	318				
Composition	% 100 Olefin				
PHYSICAL PROPERTIES					
Pilling	4			EN ISO 12945-2 : 2000 (5000 revs)	
Abrasion (martindale)	18.000			EN ISO 12945-2 : 1998	
Oil Repellency	3			ISO EN 14419	
Spray Test	4-5			BS EN ISO 1920	
Flammibility	pass			EN ISO 1021-1	
Anti Bacterial	pass			LIS L 1902	
FASTNESS					
Technical Informations	LOD	OD	OD+	OD++	Test Method
Light	7	7	7/8	8	BS EN ISO 105-B02
Weathering	6	6/7	7	7/8	BS EN ISO 105-B04
UV	4	4	4/5	5	ASTM G-154 (1200 Hours)
Washing	4/5			BS EN ISO 105-C06 40 C	
Sea Water	4/5			BS EN ISO 105-E02	
Pool Water	4/5			BS EN ISO 105-E03	
Rubbing	4/5			BS EN ISO 105-X12	

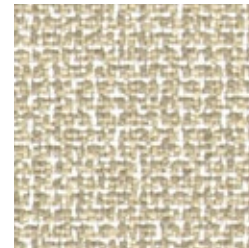
CARE AND MAINTANCE INSTRUCTIONS

1- Remove any residual soil by ligtly brushing or scraping the stain by sponging down with water
2- If further cleaning needed, apply a solution with soap an water. Work the solution into stain by lightly scrubbing the area with sponge or very soft bristle brush
3- Remove cleaning solutions with a clean soft towel or sponge to remove the stain and excess cleaning solution. (Repeat step 2 and 3 until stain is removed.)
4- Rinse the a
Vacuum the fabric prior to cleaning
Do not be alarmed if stain is not removed after jrst application and removal of cleaning solution
If the fabric can be removed from furniture it may be cleaned in a mild soap and warm water (40 C°) solution in washing machine and dried in an environment also less then 40 C°.
Do not steam press or dry in electric or gas dryers. Allow fabric to be air dried naturally
Do not leave your product after 50 C° outside temperature under directly sunlight
Results can be vary region by region
The values for the products my have a varition of +/- %5
Art Picture is for indoor use only

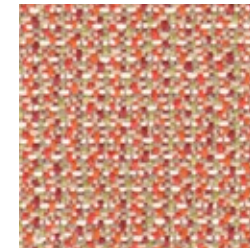
MATTEO

GROUP B

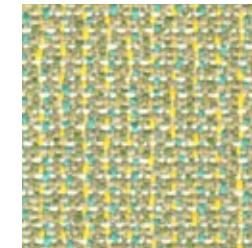
MATTEO



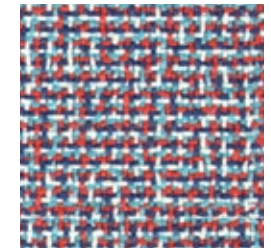
01



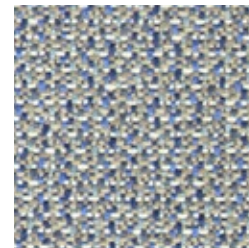
09



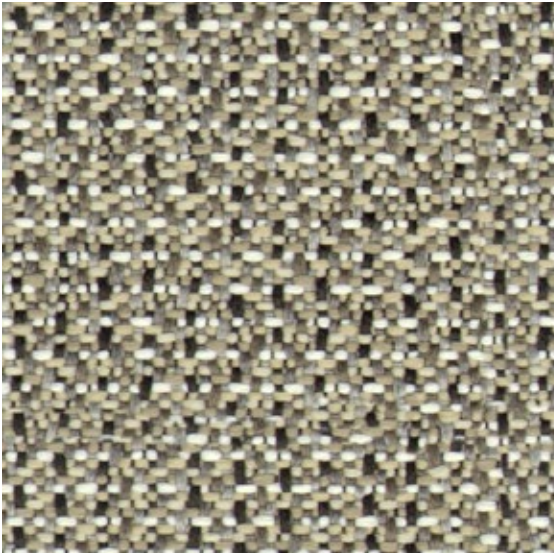
10



23



24



25

PRODUCT SPECIFICATIONS					
Technical Informations		Value			Test Method
TECHNICAL PROPERTIES					
Width (cm)	140				
Weight (gr/m2)	463				
Composition	% 100 Olefin				
PHYSICAL PROPERTIES					
Pilling	5			EN ISO 12945-2 : 2000 (5000 revs)	
Abrasion (martindale)	28.000			EN ISO 12945-2 : 1998	
Oil Repellency	3			ISO EN 14419	
Spray Test	4-5			BS EN ISO 1920	
Flammibility	pass			EN ISO 1021-1	
Anti Bacterial	pass			LIS L 1902	
FASTNESS					
Technical Informations	LOD	OD	OD+	OD++	Test Method
Light	7	7	7/8	8	BS EN ISO 105-B02
Weathering	6	6/7	7	7/8	BS EN ISO 105-B04
UV	4	4	4/5	5	ASTM G-154 (1200 Hours)
Washing	4/5			BS EN ISO 105-C06 40 C	
Sea Water	4/5			BS EN ISO 105-E02	
Pool Water	4/5			BS EN ISO 105-E03	
Rubbing	4/5			BS EN ISO 105-X12	

CARE AND MAINTANCE INSTRUCTIONS

1- Remove any residual soil by ligtly brushing or scraping the stain by sponging down with water
2- If further cleaning needed, apply a solution with soap an water. Work the solution into stain by lightly scrubbing the area with sponge or very soft bristle brush
3- Remove cleaning solutions with a clean soft towel or sponge to remove the stain and excess cleaning solution. (Repeat step 2 and 3 until stain is removed.)
4- Rinse the a
Vacuum the fabric prior to cleaning
Do not be alarmed if stain is not removed after jrst application and removal of cleaning solution
If the fabric can be removed from furniture it may be cleaned in a mild soap and warm water (40 C°) solution in washing machine and dried in an environment also less then 40 C°.
Do not steam press or dry in electric or gas dryers. Allow fabric to be air dried naturally
Do not leave your product after 50 C° outside temperature under directly sunlight
Results can be vary region by region
The values for the products my have a varition of +/- %5
Art Picture is for indoor use only



www.metaliks.com.tr